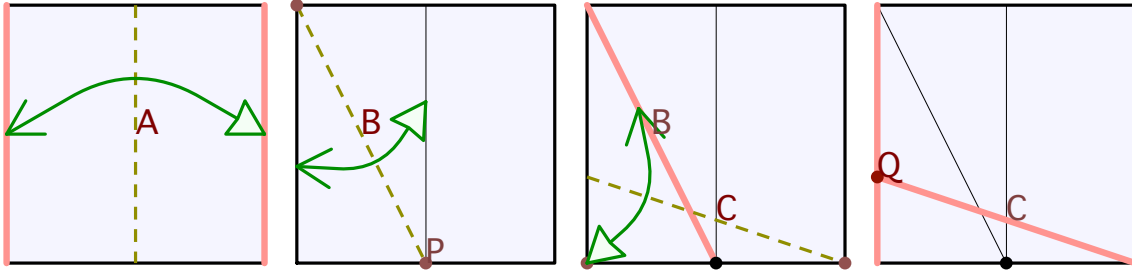


Paper: (1.0 x 1.0), Target: point (0, 1/3)



Solution (0.0000,0.3333): err = 0.0000 (rank 3)

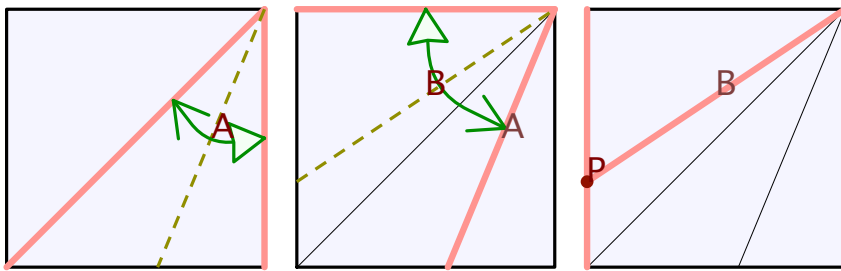
Fold the right edge to the left edge, making line A.

The intersection of the bottom edge with line A is point P.

Form a crease connecting the top left corner with point P, making line B.

Bring the bottom left corner to line B, making line C.

The intersection of the left edge with line C is point Q.

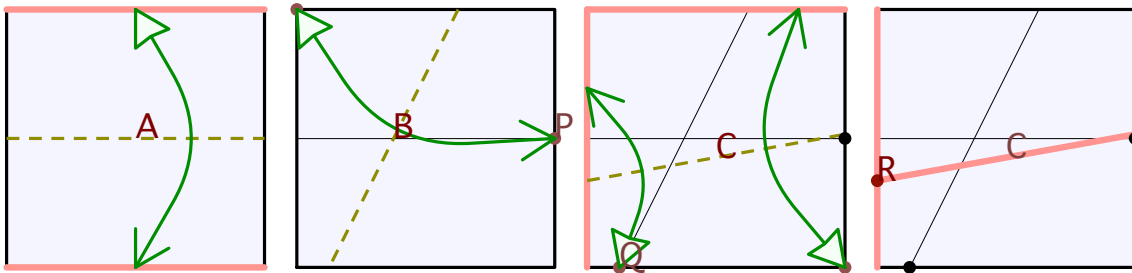


Solution (0.0000,0.3318): err = 0.0015 (rank 3)

Fold the right edge to the upward diagonal, making line A.

Fold the top edge to line A, making line B.

The intersection of the left edge with line B is point P.



Solution (0.0000,0.3364): err = 0.0030 (rank 3)

Fold the top edge to the bottom edge, making line A.

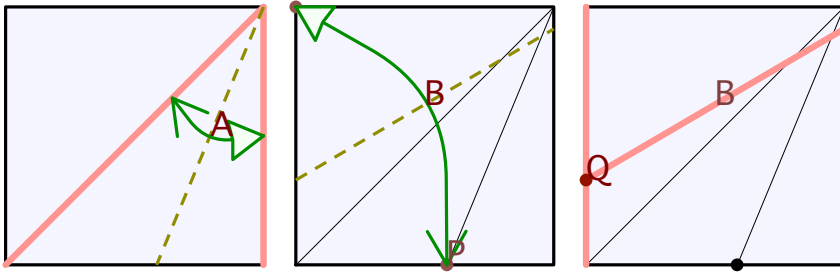
The intersection of the right edge with line A is point P.

Bring the top left corner to point P, making line B.

The intersection of the bottom edge with line B is point Q.

Bring the bottom right corner to the top edge and point Q to the left edge, making line C.

The intersection of the left edge with line C is point R.



Solution (0.0000,0.3284): err = 0.0049 (rank 3)

Fold the right edge to the upward diagonal, making line A.

The intersection of the bottom edge with line A is point P.

Bring the top left corner to point P, making line B.

The intersection of the left edge with line B is point Q.